



**SCM**

Engineering & Mining

# BUSINESS PROFILE

# BACKGROUND

SCM Engineering and Mining (Pty) Ltd is a 100% black owned engineering and mining company established in 2019. The founder saw an opportunity in the industry of bringing solutions that won't only be innovative but also efficient. The objective is to bridge the gaps in the industry of engineering and mining sectors throughout South Africa and the entire African continent. The company strives to offer the best engineering solutions and mining skills namely, Mechanical Construction, Consulting Engineering Design, Maintenance and Mining Supplies.

*"If you want to reach the top, don't run over others. Likely, the only way you'll reach the top is to be carried there by others."*

**John C. Maxwell**

## Business Value Proposition

SCM Engineering and Mining (Pty) Ltd core business is to offer engineering solution and mining skills namely, Mechanical Construction, Consulting Engineering Design, Maintenance, and Mining Supplies.

### VISION

At SCM Engineering and Mining (Pty) Ltd we seek to uplift and service the engineering and mining sectors. Our vision is not only to uplift the two sectors but to produce work that is highly innovative and the best quality in our services.

### MISSION

Our mission is to produce high quality work. Innovation is our forte, and delivering the best services in all the projects and design, new systems that we produce as the company. We are detail oriented and make sure that we adhere to our client requests and to our utmost best to meet their needs.

### VALUES

- Deadline Oriented
- Quality Work
- Integrity
- Professionalism
- Environmental Consciousness

# OUR SERVICES

## Core Services

### MECHANICAL ENGINEERING SERVICES

#### Mechanical Designs

- Steel Structural Design and Installation
- Storage Tank Design
- Piping routing Design and Installation
- Pressure Equipment Design
- General Mechanical Design

#### Mechanical Engineering Services

- General Engineering and Plant Maintenance
- Rotating Equipment Lubrication
- Conveyor Belts Maintenance
- Welding (Pipelines, Tanks, Pressure Vessels and Boilers)

### CIVIL ENGINEERING SERVICES

- Storm Water and Drainage Design
- Haul Road Design and Construction
- Mechanical Structures and Workshops

## **ELECTRICAL ENGINEERING**

## **PROJECT MANAGEMENT**

- Quantity Survey
- Contract Administration
- Development Planning
- Construction Programming
- Critical Path Analysis

## **MINING SERVICES**

- Fluid Management (Dewatering)
- Mine Rehabilitation

## **Mining Supplies**

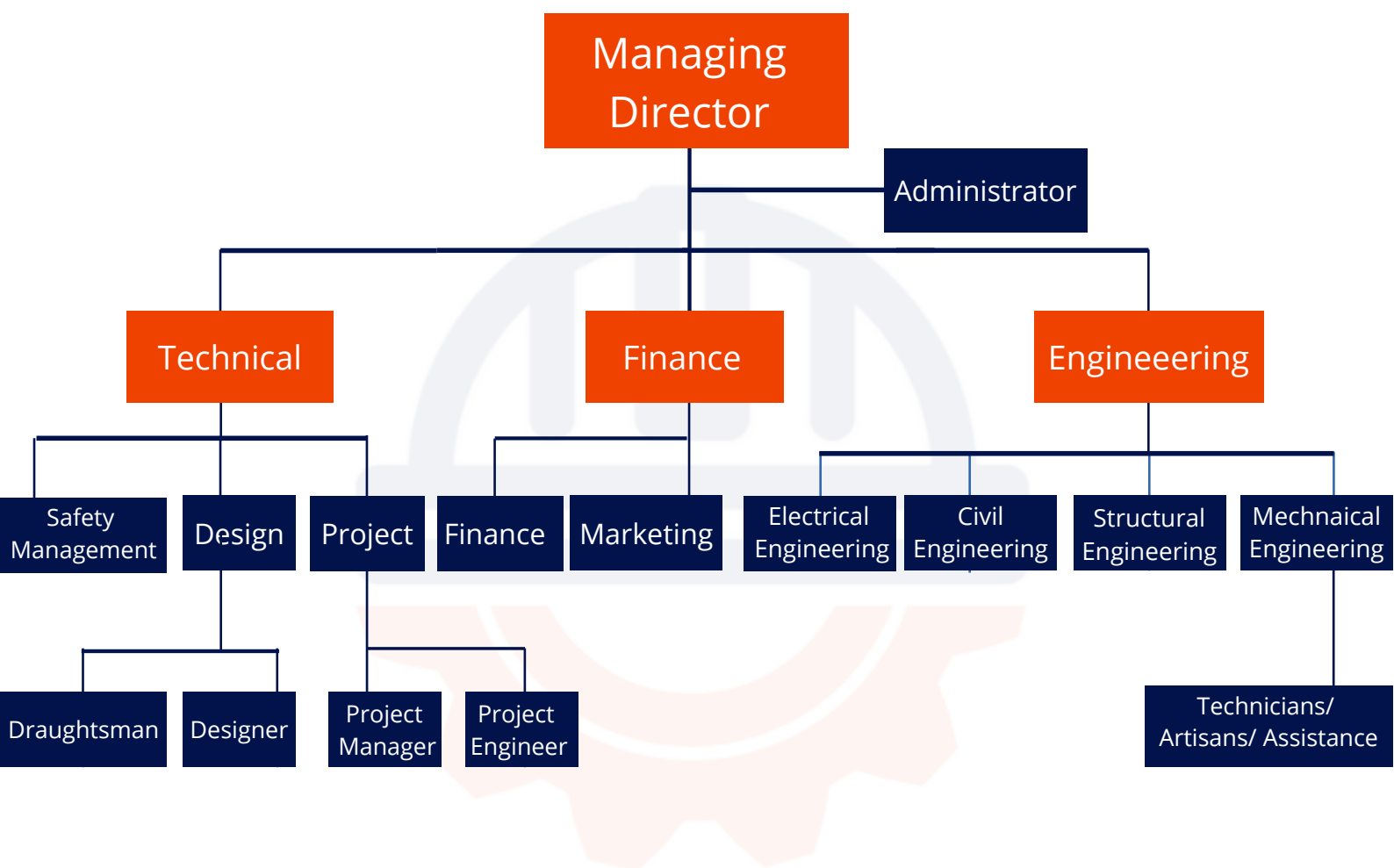
**We supply the following:**

- HDPE Pipes
- Dewatering Accessories
- Valves and Pumps
- Lubricants and Oils

## **OTHER SERVICES**

- Renewable Engergy

# SCM ENGINEERING AND MINING Organogram





## CONTACT US

Cell no:

Siyamthanda Mchophele - Director & Head of Technical Services  
+27 83 239 5215

Email:

[info@scmengineeringandmining.co.za](mailto:info@scmengineeringandmining.co.za)

Website:

[www.scmengineeringandmining.co.za](http://www.scmengineeringandmining.co.za)

Address:

64 Spogviooltjie Crescent,  
Kathu, 8446

Reg No. 2019/ 344222/ 07